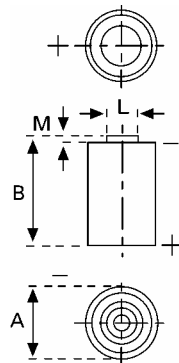


**Data Sheet**

**Type Number** ..... 6237  
**Designation IEC** ..... ---  
**System** ..... Li-Manganese dioxide / Organic Electrolyte

**UL Recognition:**..... MH 13654 (N)  
**Nominal Voltage** ..... 3 V  
**Typical Capacity C** ..... 1350 mAh  
 Load 1.0 kOhm, at 20°C down to 2.0 V



**Weight (approx.)** ..... 15 g  
**Volume** ..... 5,6 ccm  
**Coding**..... Date of Manufacturing Quarter / Year

**Temperature Ranges**  
 Storage ..... min max.  
 Discharge ..... -55°C 75 °C  
 ..... -30°C 75°C

**Dimensions** min max.  
 Diameter (A) ..... 11,45 14,75  
 Height (B) ..... 33,1 33,5  
 Shoulder Diameter[E]..... 7  
 Shoulder Height [C]..... 0,6

**Segment** ..... Electronic

**Main Applications** ..... Electronic

**Typical Capacities (at 20°C)**

| Discharge Type                                  | Load          | End Voltage:                              | 2.0 V                 |
|---|---------------|---|-----------------------|
| Continuous<br>24h/d,7d/w<br>Current [ $\mu$ A]: | 1000 $\Omega$ | Time:<br>Capacity [mAh]:<br>Energy [MWh]: | 500 h<br>1350<br>3600 |

All Data contained herein is for single cells

For battery applications, performance data may vary from single cell data, depending on specific battery configuration